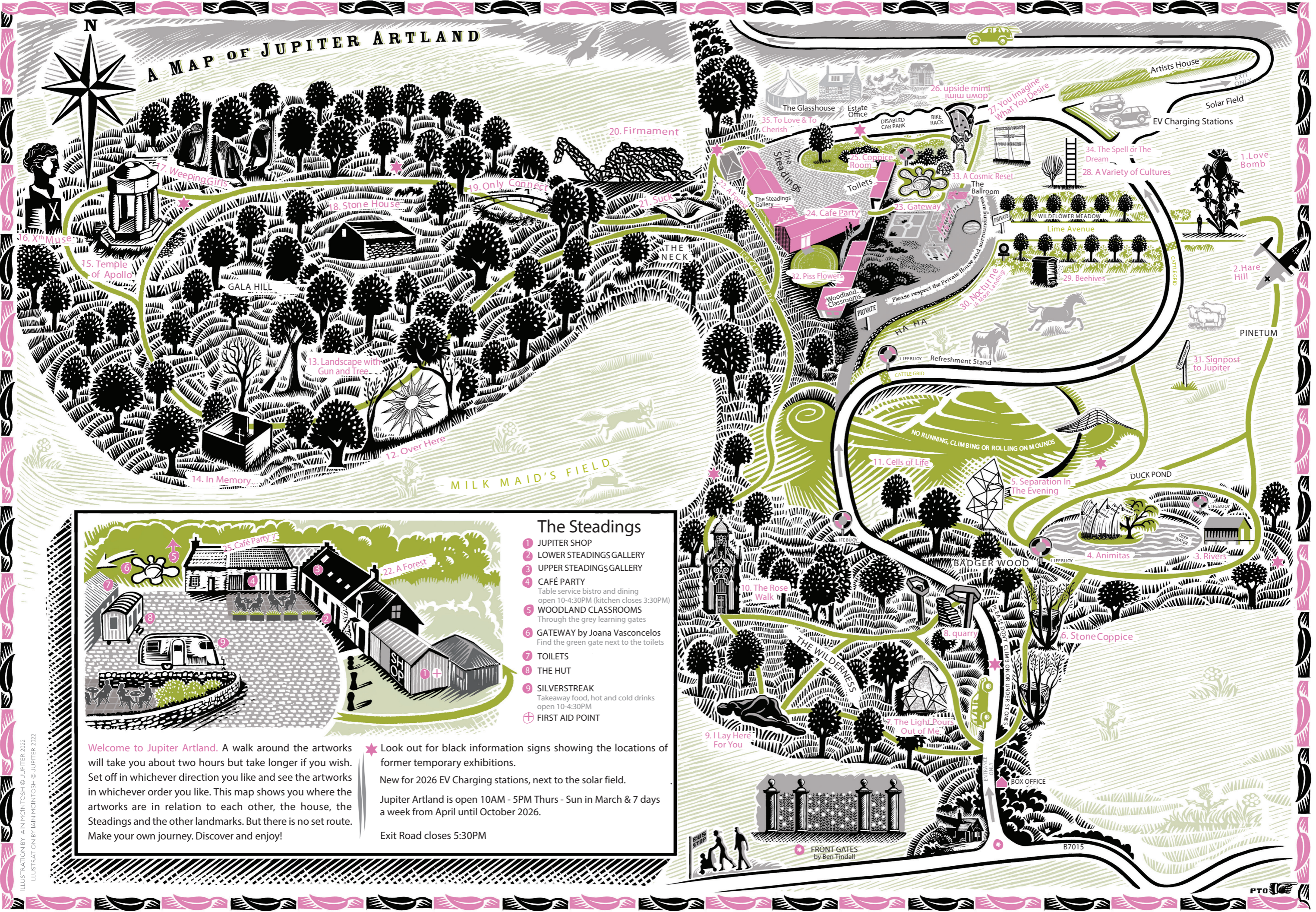


A MAP OF JUPITER ARTLAND



- ### The Steadings
- 1 JUPITER SHOP
 - 2 LOWER STEADINGS GALLERY
 - 3 UPPER STEADINGS GALLERY
 - 4 CAFÉ PARTY
Table service bistro and dining open 10-4:30PM (kitchen closes 3:30PM)
 - 5 WOODLAND CLASSROOMS
Through the grey learning gates
 - 6 GATEWAY by Joana Vasconcelos
Find the green gate next to the toilets
 - 7 TOILETS
 - 8 THE HUT
 - 9 SILVERSTREAK
Takeaway food, hot and cold drinks open 10-4:30PM
 - ⊕ FIRST AID POINT

Welcome to Jupiter Artland. A walk around the artworks will take you about two hours but take longer if you wish. Set off in whichever direction you like and see the artworks in whichever order you like. This map shows you where the artworks are in relation to each other, the house, the Steadings and the other landmarks. But there is no set route. Make your own journey. Discover and enjoy!

★ Look out for black information signs showing the locations of former temporary exhibitions.
New for 2026 EV Charging stations, next to the solar field.
Jupiter Artland is open 10AM - 5PM Thurs - Sun in March & 7 days a week from April until October 2026.
Exit Road closes 5:30PM



1. LOVE BOMB
MARC QUINN LIME AVENUE

"A modified flower at once monstrous and seductively beautiful, demonstrating the ways in which human desires are now shaping the natural world."



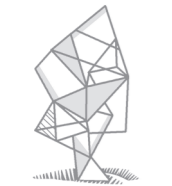
2. HARE HILL
HENRY CASTLE THE BOUNDARY WALL
Rubber, bronze and black granite. "The work exists in two places; in a boundary wall of the grounds of Bonnington House and buried in the Pentlands at Hare Hill some 3 miles away. The two sites are connected by two events in the 2nd World War."



3. RIVERS
TANIA KOVATS DUCK POND
A boathouse built over deep water. Inside the boathouse is a collection of water from one hundred rivers around the British Isles. "Each river has a history and each river has a story and in some way I am trying to capture that in each bottle."



4. ANIMITAS
CHRISTIAN BOLTANSKI DUCK POND
Hundreds of small Japanese bells attached to long stems planted in the ground. The bells chiming to the wind let out the 'music of souls' and reproduce the map of the stars on the night Boltanski was born. "What I'm trying to do is to remind people to forget it's art and think about it as life."



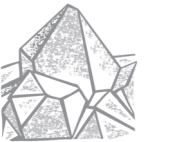
5. SEPARATION IN THE EVENING
(A Celestial Blossom Before the Yellow House)
SARA BARKER DUCK POND

"The various material surfaces create a collage of real & imagined landscape, where hand-painted, real and reflected colour affects the perception of form."



6. STONE COPPICE
ANDY GOLDSWORTHY BADGER WOOD

Unused boulders from Stone House placed in coppiced trees with limbs able to hold them. The work will be tended. A further round of stones might be placed in 10-15 years. "A living, growing, changing sculpture in which people and wood play equally important roles."



7. THE LIGHT POURS OUT OF ME
ANYA GALLACCIO THE WILDERNESS

An underground chamber of amethyst surrounded by obsidian in its natural state, protected by gold barbed wire.



8. QUARRY
PHYLLIDA BARLOW THE WILDERNESS

Two towering cement and steel columns and a mountainous flight of ruined steps. "High above, making the sky an image -"



9. I LAY HERE FOR YOU
TRACEY EMIN THE WILDERNESS

"I lay here for you. An expectation of love. Distant memories that become unrequited moments."



10. THE ROSE WALK
PABLO BRONSTEIN THE WILDERNESS

Wooden Gothic and Chinese porticos facing each other alongside a courtyard, lined by beds of roses. "Irony and pleasure co-exist in an emblem of 18th century tastes."



11. CELLS OF LIFE
CHARLES JENCKS ICE CREAM LANE
Terraced earthworks with embedded paths, summit sculptures and inscriptions. Mounds of soil and turf. "A landform celebration of the cell as the basis of life."



12. OVER HERE
SHANE WALTENER MILKMAID'S FIELD
Inspired by Shetland lace. "Trapping the essence of the place and framing an ever changing imprint of it."



13. LANDSCAPE WITH GUN AND TREE
CORNELIA PARKER GALA HILL
Cast iron and corten steel. "In Gainsborough's, Mr. and Mrs Andrews, a couple are posed under a tree, Mr Andrews carries a shotgun under his arm and his wife sits with her (unfinished) hands in her lap. In Landscape with Gun and Tree, a gun has been left leaning against a tree, possibly loaded."



14. IN MEMORY
NATHAN COLEY GALA HILL
A simple enclosure formed by poured concrete surrounding a tended graveyard with headstones and planting. "In memory asks us to think about how we mark lives that are passed."



15. TEMPLE OF APOLLO
IAN HAMILTON FINLAY GALA HILL

The quote 'Consecutive upon Apollo a titanic revolt in his heart' is from L.A. St-Juste, Finlay's 'Apollo of the French Revolution'. "Temple (n): a sacred place; a place menaced by bailiffs."



16. XTH MUSE
IAN HAMILTON FINLAY GALA HILL
Sappho, the tenth muse, is the poetess of erotic lyricism and the symbol of love and beauty.



17. WEEPING GIRLS
LAURA FORD GALA HILL
Figures hand carved from waxes. Cast in found objects at the foundry. Patinated and painted bronze. "The site I have picked at Jupiter has a quiet, melancholic atmosphere."



18. STONE HOUSE - BONNINGTON
ANDY GOLDSWORTHY GALA HILL

Stone house made from locally quarried stone. "Houses are usually places of security, shelter and comfort. There is something unnerving about entering a building in which nature is the occupant"



19. ONLY CONNECT
IAN HAMILTON FINLAY GALA HILL
Arched bridge between two milestones each inscribed with the closing words of 'Howards End' by E.M. Forster. "I can only write what the muse allows me to write."



20. FIRMAMENT
ANTONY GORMLEY GALA HILL
Inspired by an old star map, steel elements form a crouching figure. Sited on a horizon; best viewed with the sky through it. "Think about the endless condition of the sky and the conditioned space of architecture."



21. SUCK
ANISH KAPOOR THE NECK
Hole with walls plated in cast iron and opening barred by seventeen-foot high cast iron cage. "We all know what darkness is. We carry it within us."



22. A FOREST
JIM LAMBIE STEADING WALL
"The forest that we look at reflected in the chrome panels is being peeled away revealing layers of colour. The reflection in the work will change with every season that passes."



23. GATEWAY
JOANA VASCONCELOS THE STEADINGS
An intricately designed pool within landscaped gardens, featuring 11,500 handcrafted Portuguese tiles. "Gateway is a big splash that invites the public to immerse in a joyful and spirited dimension."



24. CAFÉ PARTY
NICOLAS PARTY THE STEADINGS
Colourful wall murals and brightly designed French bistro-style furniture adorning the interior of the Jupiter café. "A Parisian Bistro in Alice in Wonderland."



25. COPPICE ROOM
ANDY GOLDSWORTHY THE STEADINGS
Limbs coppiced from Badger Wood suspended together in a room. "It is so subversive... Inside of that skin lies this forest... It is very dark and you just disappear."



26. UPSIDE MIMI IWIW NMOG
RACHEL MACLEAN THE STEADINGS
"Come, my pretties, follow mi through the enchanted forest and discover mi's candy-coloured store, where everything friendly and familiar is flipped on its head."



27. YOU IMAGINE WHAT YOU DESIRE
NATHAN COLEY THE HAHA
Illuminated text on scaffolding, inspired by words from the Irish playwright George Bernard Shaw. "Fairground lights describing the essence of imagination, and our first thoughts towards creativity."



28. A VARIETY OF CULTURES
ALEC FINLAY ORCHARD
An orchard of native apple and plum varieties with the addition of oak ladders. Placed near the trees, which are still young, the measure of the ladders anticipates the eventual extent the pruned canopies will fill.



29. BEEHIVES IAN HAMILTON FINLAY WILDFLOWER MEADOW
Five WBC beehives awaiting bees, with the inscription: "BEES; they lightly skim;



30. NOCTURNE (A MOON LANDING)
CORNELIA PARKER THE HAHA
A subverted National Trust sign commemorates when precious fragments of moon rock were scattered over the estate during the opening event in May 2009. "The firework display was inspired by Whistler's 'Nocturne in Black and Gold, The Falling Rocket' (1875) and Debussy's Nocturnes."



31. SIGNPOST TO JUPITER
PETER LIVERSIDGE THE MIDDLE
Information sign with the inscription 'Jupiter - 893 million to 964 million kilometres'. "The calculation takes into account that both the Earth and Jupiter are in elliptical orbits around the sun."

32. PISS FLOWERS
HELEN CHADWICK CAFE GARDEN
A group of sculptures that resemble flowers, made by casting the shapes made from urinating into snow - repulsive and beautiful.

33. A COSMIC RESET
LAURA ALDRIDGE BALLROOM GARDEN
A fountain of spiralling ceramic shells, the sonorous drip of water moving over stacked sculptural forms and painterly glazes.

NEW FOR 2025/26
34. THE SPELL OR THE DREAM
TAI SHANI THE ORCHARD

35. TO LOVE & TO CHERISH
JUPITER COMMISSION 2025
FLORENCE PEAKE GLASSHOUSE

GALLERY EXHIBITIONS

Extraction
11 April - 26 July 2026
Ballroom & Steadings Gallery

Sgàire Wood
14 August - 18 October 2026

RULES

PLEASE DO:

- Photograph the artworks and tag us @jupiter.artland
- Feel free to ascend Jencks' Cells of Life by way of the paths.
- Take responsibility for any children or teenagers in your charge.
- Report any vandalism, anti-social behaviour or breach of these rules to a member of staff.
- Take care within the park as you enter at your own risk and we cannot take responsibility for accidents or personal injury.
- Respect the artwork as some are fragile

PLEASE DON'T:

- Bring a picnic or BBQ.
- Bring a dog without a ticket or membership.
- Bathe in the water features outside of the Wild Swimming times.
- Play loud music or drop litter.
- Enter the private house area (which includes the formal rear garden).
- Climb on any of the sculptures.
- Roll down, slide or climb up the sides of the Jencks' Cells of Life (however tempting this may seem!)

CALL 01506 88 99 00 IN THE EVENT OF AN EMERGENCY. A FIRST AID POINT IS LOCATED AT THE SHOP, LIFEBUOYS ARE SITUATED TO THE NORTH OF CELLS OF LIFE, GATEWAY AND BY THE EDGE OF THE DUCK POND (SEE MAP FOR DIRECTIONS)